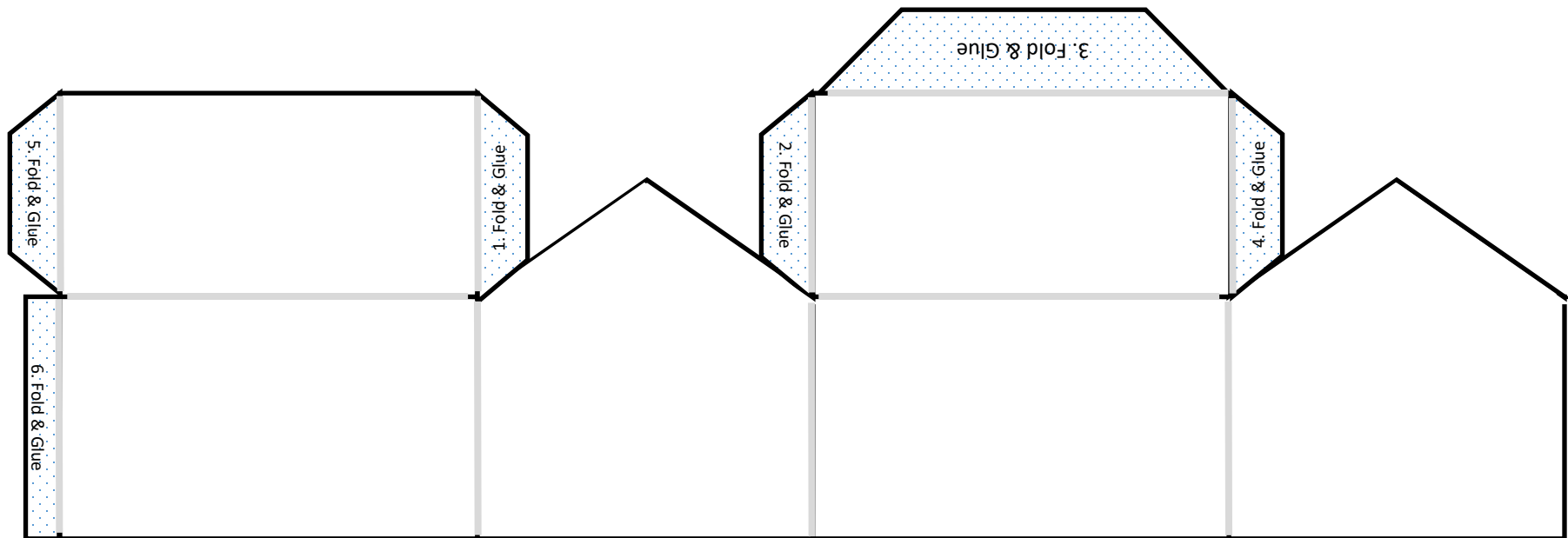


Design Your Own House! (Easy)

Make it look like your house or create something completely new! Which side is the entrance? How many windows? What shape are the windows? Are there windows in the gable (the pointy part?)? What other architectural decorations will you add? Is it brick? Does it have horizontal siding?



Instructions:

1. Color the building & add festive decorations
2. Cut out along the outside black lines
3. Fold along the gray lines
4. Secure into a building shape by gluing the flaps to the back of the walls.

Optional: In step 2, cut out the windows. When you're done, add a battery-powered tea light inside the building!

Carver Memorial
Library



PENOBSCOT
MARINE MUSEUM