

Fowler-True-Ross House (Easy)

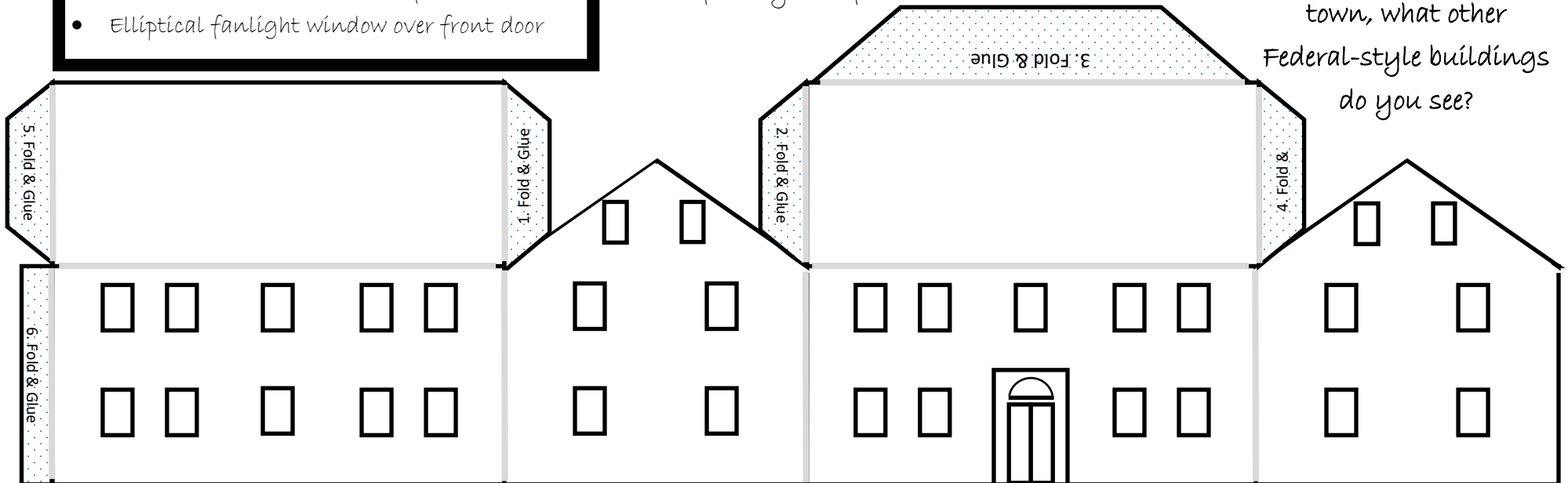
Federal Architecture

(approx. 1780s-1830s)

- Emphasizes size, symmetry, and proportion
- Square or rectangular
- 2 or 3 stories high
- Windows laid out in a line, often 5
- Elliptical fanlight window over front door

The Fowler-True-Ross House at the Penobscot Marine Museum is an excellent example of Federal Architecture. In 1837, the Fowler family—Miles, Jane, and children Rufus, Martha Jane, Emily, and Cyrus True—built the large part of house that faces Route 1. Miles was a sea captain and the family also farmed.

As you drive around town, what other Federal-style buildings do you see?



Instructions:

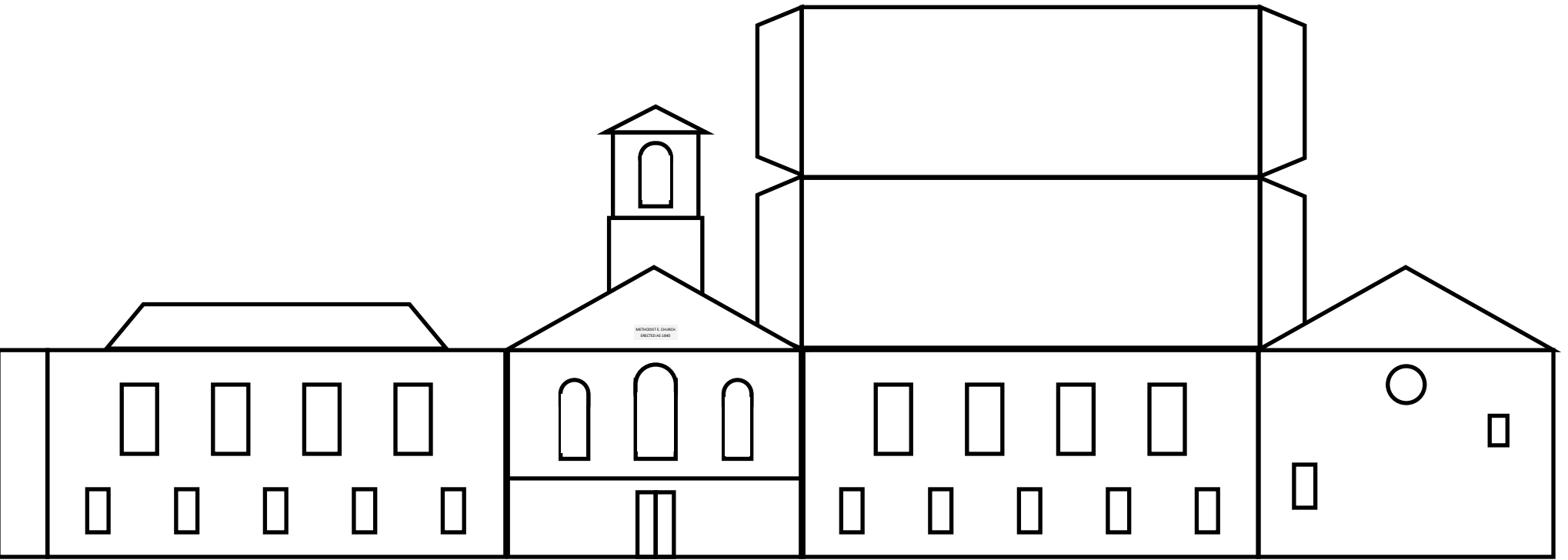
1. Color the building & add festive decorations
2. Cut out along the outside black lines
3. Fold along the gray lines
4. Secure into a building shape by gluing the flaps to the back of the walls.

Optional: In step 2, cut out the windows. When you're done, add a battery-powered tea light inside the building!

Carver Memorial
Library



PENOBSCOT
MARINE MUSEUM



MENNONITE QUARRY
SECTIONAL VIEW

